

Proportion of Thai Patients with Atrial Fibrillation Receiving Warfarin with Labile INR in Each Group of SAMETT₂R₂ Score

Komsing Methavigul MD, FRCPT¹

¹ Department of Cardiology, Central Chest Institute of Thailand, Nonthaburi, Thailand

Objective: To determine the proportion of Thai AF patients used warfarin with labile INR in each SAMETT₂R₂ score.

Materials and Methods: The present retrospective study recruited Thai atrial fibrillation [AF] patients treated at the Central Chest Institute of Thailand. They took warfarin for at least three months before enrollment. The patients that discontinued warfarin during the international normalized ratio [INR] monitoring because of surgery, invasive procedure, hospitalization, or any etiologies were excluded. Each AF patients was measured for the INR to determine the proportion of patients with labile INR in each SAMETT₂R₂ score.

Results: Forty AF patients were enrolled. The mean age was 64.35±10.69 years old. Most patients were paroxysmal AF. The average CHA₂DS₂-VASc score was 3.20±1.56. Half of these patients had hypertension and hypercholesterolemia. Almost one-fifth of these patients had history of ischemic stroke. The study showed the increased proportion of AF patients with labile INR according to the increased SAMETT₂R₂ score. The AF patients with SAMETT₂R₂ score of 3 or more had a closer proportion of patients with labile INR than those with SAMETT₂R₂ score of 2 or less with borderline significance (*p*-value 0.056).

Conclusion: Thai AF patients with increased SAMETT₂R₂ score had potential of having labile INR. However, a larger study is needed to use SAMETT₂R₂ score for predicting Thai AF patients with labile INR in the future.

Keywords: Atrial fibrillation, Bleeding risk score, Anticoagulant, Labile INR, SAMETT₂R₂

J Med Assoc Thai 2018; 101 (2): 189-93

Website: <http://www.jmatonline.com>

Atrial fibrillation [AF] is a common cardiac arrhythmia in the clinical practice. The oral anti-coagulant is indicated in these patients with CHA₂DS₂-VASc score of 1 or more for prevention of ischemic stroke^(1,2). Warfarin is the most prescribed anticoagulant in Thailand but it has several adverse effects in bleeding risk including intracranial hemorrhage. Those that take warfarin should be monitored with international normalized ratio [INR]. The therapeutic range of INR is between 2 and 3⁽³⁻⁵⁾. The patients will suffer from the ischemic stroke if their INR level is below 2 and suffer from the intracranial hemorrhage if their INR is above 3.

Presently, there is the novel oral anticoagulant, non-vitamin K antagonist oral anticoagulant [NOAC], in Thailand. This anticoagulant needs no blood level monitoring and is associated with lower risk of

intracranial bleeding⁽⁶⁻⁹⁾. The NOAC costs more than warfarin. A patient selection criterion appropriate for NOAC is needed.

Many doctors prescribe NOAC to replace warfarin because of labile INR in several patients. Previous study by Apostolakis et al⁽¹⁰⁾ showed that SAMETT₂R₂ score of 2 or more can be used to predict patients with labile INR⁽¹¹⁾.

The present study was conducted to determine the proportion of Thai AF patients that used warfarin with labile INR in each SAMETT₂R₂ score.

Materials and Methods

The present study was conducted retrospectively in Thai patients aged 18 years or more with atrial fibrillation using warfarin for three months or more in Central Chest Institute of Thailand between 2000 and 2015. The patients that stopped the warfarin during follow-up period because of invasive procedure, operation, or other causes, those who had their INR values far from each other for more than six months, those with prosthetic heart valve, and those who were

Correspondence to:

Methavigul K. Department of Cardiology, Central Chest Institute of Thailand, 74 Tiwanon Road, Bangkrasor, Muang Nonthaburi 11000, Thailand.

Phone: +66-2-5470920, **Fax:** +662-5470990

Email: hnueng@gmail.com

How to cite this article: Methavigul K. Proportion of Thai patients with atrial fibrillation receiving warfarin with labile INR in each group of SAMETT₂R₂ score. J Med Assoc Thai 2018;101:189-93.

hospitalized during study were excluded. The SAMeTT₂R₂ score included female sex, age less than 60 years, medical history of more than two of following co-morbidities: hypertension, diabetes, coronary artery disease/myocardial infarction, peripheral arterial disease, congestive heart failure, previous stroke, pulmonary disease, or hepatic or renal disease, treatment with interacting drugs such as amiodarone for rhythm control, tobacco use (doubled), and non-Caucasian race (doubled). The labile INR was defined as the INR level less than 60% of follow-up period, the occurrence of the ischemic stroke when INR was below 2, and the bleeding event when INR was above 3⁽¹²⁾. The study protocol was approved by the Institutional Review Board. The present study complied with the Declaration of Helsinki.

The categorical data are presented as frequency and percentage. The continuous variables are presented as mean ± SD. The Chi-square test or Fisher's Exact test was used to compare the proportion of the patients with labile INR in each SAMeTT₂R₂ score. A *p*-value of 0.05 or less was considered as statistical significance. All statistical analyses were performed with SPSS Statistics software, version 23 (IBM Corp).

Results

Forty AF patients were enrolled. The mean age

Table 1. Baseline characteristics of the patients

Characteristics	Total (n = 40) n (%) or mean ± SD
Age (years)	64.35±10.69
Male gender	18 (45.0)
Paroxysmal AF	37 (92.5)
CHA ₂ DS ₂ -VASc score	3.20±1.56
SAMeTT ₂ R ₂ score	3.40±0.84
Medical history	
Diabetes mellitus	8 (20.0)
Hypertension	23 (57.5)
Hypercholesterolemia	19 (47.5)
Coronary artery disease	12 (30.0)
Valvular heart disease	16 (40.0)
Chronic kidney disease	2 (5.0)
History of previous ischemic stroke or TIA	7 (17.5)
LVEF (%)	57.00±18.38
Medications	
Beta-blockers	27 (67.5)
Nondihydropyridine CCB	4 (10.0)
Digoxin	14 (35.0)
Warfarin	40 (100)
Aspirin	11 (27.5)
Clopidogrel	4 (10.0)

n = numbers; SD = standard deviation; AF = atrial fibrillation; TIA = transient ischemic attack; LVEF = left ventricular ejection fraction; CCB = calcium channel blockers

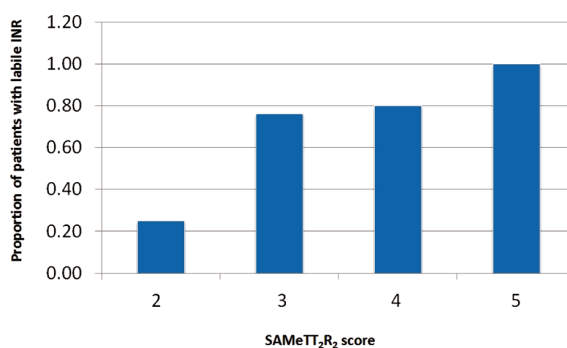


Figure 1. The proportion of Thai AF patients with labile INR in each group of SAMeTT₂R₂ score.

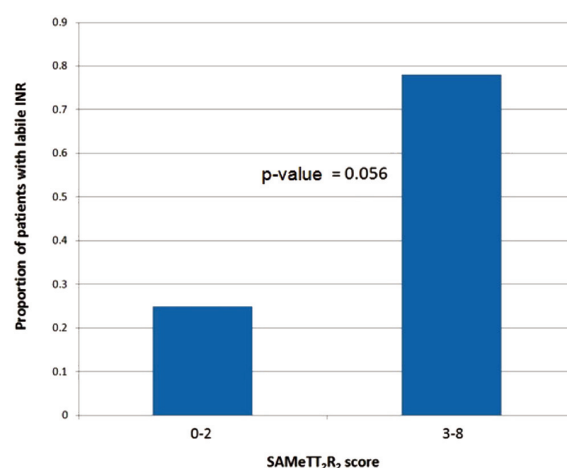


Figure 2. The proportion of Thai AF patients with labile INR between SAMeTT₂R₂ score of 2 or less and SAMeTT₂R₂ score of 3 or more.

was 64.35±10.69 years old. Most patients were paroxysmal AF. The average CHA₂DS₂-VASc score was 3.20±1.56. Half of these patients had hypertension and hypercholesterolemia. Almost one-fifth of these patients had the history of ischemic stroke. The baseline characteristics of the patients were shown in Table 1.

The present study showed the increased proportion of AF patients with labile INR according to the increased SAMeTT₂R₂ score as shown in Figure 1. The AF patients with SAMeTT₂R₂ score of 3 or more had similar proportion of patients with labile INR, and more than those with SAMeTT₂R₂ score of 2 or less with borderline significance (*p*-value 0.056) as shown in Figure 2.

Discussion

The present study has shown that the AF patients receiving warfarin had an incremental risk of labile

INR when the SAME_{TT}₂R₂ score increased. This result supported a previous study by Apostolakis et al⁽¹⁰⁾. However, the SAME_{TT}₂R₂ score predicting the labile INR in the AF patients with warfarin in the present study is still different from the previous study. That study showed the SAME_{TT}₂R₂ score of 2 or more predicted the labile INR in the AF patients with warfarin, while the present study showed the SAME_{TT}₂R₂ score of 3 or more may predict the labile INR in these patients. The different results in the present study came from the racial difference in the two trials. Apostolakis et al studied the AF patients from the Atrial Fibrillation Follow-up Investigation of Rhythm Management [AFFIRM] study⁽¹¹⁾, which most patients were Caucasian and the few ones were non-Caucasian (9.8%). The present study gave the score of 2 for the non-Caucasian race, so the Asian patients with AF would always have the SAME_{TT}₂R₂ score of 2 or more because of their race. This trial studied in the Thai patients and showed the different results from the Caucasian trial. This trial showed the AF patients with the SAME_{TT}₂R₂ score of 3 or more receiving warfarin had the incremental labile INR with borderline significance (*p*-value 0.056).

The reason that different race has different numbers is because of the different genetic profile. The previous study revealed the Asian AF patients with warfarin^(1,15-17) had more bleeding than the western patients⁽¹³⁾, while they had similar thromboembolic events. CYP2C9 and VKORC1 polymorphisms can affect the quality control of warfarin. The patients with CYP2C9*2, CYP2C9*3 or VKORC1 A haplotype require a lower dose of warfarin⁽¹⁸⁻²¹⁾. However, the frequency of CYP2C9*2 and CYP2C9*3 is very low (5%) in Thai population, while the frequency of VKORC1 A haplotype is higher in Thai population (63.6%)⁽²²⁾. Therefore, the labile INR in Thai AF patients may be correlated to VKORC1 A haplotype. However, the Korean study by Park et al revealed the VKORC1 genotype was significantly associated with labile INR, but SAME_{TT}₂R₂ score was not associated with labile INR⁽²³⁾. The genetic factor may be not the single factor for predicting the labile INR and combined genetic factor and SAME_{TT}₂R₂ score may help to predict these patients.

Moreover, the present study has shown that the race in the SAME_{TT}₂R₂ score cannot be used to predict the labile INR in Thai patients with AF receiving warfarin. If the race was excluded from this score, the average score remained 1.4. The SAME_{TT}₂R₂ score of 1 or more may be used to predict the labile INR in

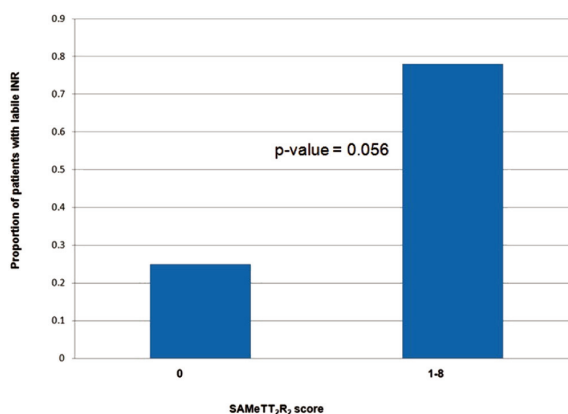


Figure 3. The proportion of Thai AF patients with labile INR between SAME_{TT}₂R₂ score of 0 or less and SAME_{TT}₂R₂ score of 1 or more after exclusion of race.

Thai patients (*p*-value 0.056) in Figure 3.

However, the present study had several limitations. First, the AF patients with the SAME_{TT}₂R₂ score of 3 or more had borderline significance in the labile INR compared with the SAME_{TT}₂R₂ score of 2 or less because of the small sample size in this study. Second, this study was a retrospective study and there were missing data in the medical records. Nevertheless, this study is the first study in Thailand showing the provisional results for a further larger study in the future and the results revealed that different SAME_{TT}₂R₂ score may predict the labile INR in Thai AF patients with warfarin.

Conclusion

Thai AF patients using warfarin had an increased proportion of labile INR according to the increased SAME_{TT}₂R₂ score. However, a larger study is needed to use SAME_{TT}₂R₂ score for predicting Thai AF patients with labile INR in the future.

What is already known on this topic?

The SAME_{TT}₂R₂ score may be used to predict the labile INR in Thai AF patients receiving warfarin.

What this study adds?

The SAME_{TT}₂R₂ score may be used to predict the labile INR in the Thai AF patients receiving warfarin using a different cut-off point from the Caucasian AF patients. The race may not be the predictor of labile INR in Thai AF patients.

Potential conflicts of interest

The author declare no conflict of interest.

References

1. Camm AJ, Lip GY, De Caterina R, Savelieva I, Atar D, Hohnloser SH, et al. 2012 focused update of the ESC Guidelines for the management of atrial fibrillation: an update of the 2010 ESC Guidelines for the management of atrial fibrillation. Developed with the special contribution of the European Heart Rhythm Association. *Eur Heart J* 2012;33:2719-47.
2. Risk factors for stroke and efficacy of anti-thrombotic therapy in atrial fibrillation. Analysis of pooled data from five randomized controlled trials. *Arch Intern Med* 1994;154:1449-57.
3. Hart RG, Pearce LA, Aguilar MI. Meta-analysis: antithrombotic therapy to prevent stroke in patients who have nonvalvular atrial fibrillation. *Ann Intern Med* 2007;146:857-67.
4. Hylek EM, Go AS, Chang Y, Jensvold NG, Henault LE, Selby JV, et al. Effect of intensity of oral anticoagulation on stroke severity and mortality in atrial fibrillation. *N Engl J Med* 2003;349:1019-26.
5. Agarwal S, Hachamovitch R, Menon V. Current trial-associated outcomes with warfarin in prevention of stroke in patients with nonvalvular atrial fibrillation: a meta-analysis. *Arch Intern Med* 2012;172:623-31.
6. Connolly SJ, Ezekowitz MD, Yusuf S, Eikelboom J, Oldgren J, Parekh A, et al. Dabigatran versus warfarin in patients with atrial fibrillation. *N Engl J Med* 2009;361:1139-51.
7. Patel MR, Mahaffey KW, Garg J, Pan G, Singer DE, Hacke W, et al. Rivaroxaban versus warfarin in nonvalvular atrial fibrillation. *N Engl J Med* 2011;365:883-91.
8. Granger CB, Alexander JH, McMurray JJ, Lopes RD, Hylek EM, Hanna M, et al. Apixaban versus warfarin in patients with atrial fibrillation. *N Engl J Med* 2011;365:981-92.
9. Giugliano RP, Ruff CT, Braunwald E, Murphy SA, Wiviott SD, Halperin JL, et al. Edoxaban versus warfarin in patients with atrial fibrillation. *N Engl J Med* 2013;369:2093-104.
10. Apostolakis S, Sullivan RM, Olshansky B, Lip GYH. Factors affecting quality of anticoagulation control among patients with atrial fibrillation on warfarin: the SAME-TT(2)R(2) score. *Chest* 2013;144:1555-63.
11. Wyse DG, Waldo AL, DiMarco JP, Domanski MJ, Rosenberg Y, Schron EB, et al. A comparison of rate control and rhythm control in patients with atrial fibrillation. *N Engl J Med* 2002;347:1825-33.
12. White HD, Gruber M, Feyzi J, Kaatz S, Tse HF, Husted S, et al. Comparison of outcomes among patients randomized to warfarin therapy according to anticoagulant control: results from SPORTIF III and V. *Arch Intern Med* 2007;167:239-45.
13. European Atrial Fibrillation Trial Study Group. Optimal oral anticoagulant therapy in patients with nonrheumatic atrial fibrillation and recent cerebral ischemia. *N Engl J Med* 1995;333:5-10.
14. Yamaguchi T. Optimal intensity of warfarin therapy for secondary prevention of stroke in patients with nonvalvular atrial fibrillation: a multicenter, prospective, randomized trial. Japanese Nonvalvular Atrial Fibrillation-Embolism Secondary Prevention Cooperative Study Group. *Stroke* 2000;31:817-21.
15. Cheung CM, Tsoi TH, Huang CY. The lowest effective intensity of prophylactic anticoagulation for patients with atrial fibrillation. *Cerebrovasc Dis* 2005;20:114-9.
16. You JH, Chan FW, Wong RS, Cheng G. Is INR between 2.0 and 3.0 the optimal level for Chinese patients on warfarin therapy for moderate-intensity anticoagulation? *Br J Clin Pharmacol* 2005;59:582-7.
17. Methavigul K, Boonyapisit W. Optimal INR level in Thai atrial fibrillation patients who were receiving warfarin for stroke prevention in Thailand. *J Med Assoc Thai* 2014;97:1274-80.
18. Sconce EA, Khan TI, Wynne HA, Avery P, Monkhouse L, King BP, et al. The impact of CYP2C9 and VKORC1 genetic polymorphism and patient characteristics upon warfarin dose requirements: proposal for a new dosing regimen. *Blood* 2005;106:2329-33.
19. Aithal GP, Day CP, Kesteven PJ, Daly AK. Association of polymorphisms in the cytochrome P450 CYP2C9 with warfarin dose requirement and risk of bleeding complications. *Lancet* 1999;353:717-9.
20. Taube J, Halsall D, Baglin T. Influence of cytochrome P-450 CYP2C9 polymorphisms on warfarin sensitivity and risk of over-anticoagulation in patients on long-term treatment. *Blood* 2000;96:1816-9.
21. Goldstein JA. Clinical relevance of genetic polymorphisms in the human CYP2C subfamily. *Br J Clin Pharmacol* 2001;52:349-55.
22. Kuanprasert S, Dettrairat S, Palacajornsuk P, Kunachiwa W, Phrommintikul A. Prevalence of

CYP2C9 and VKORC1 mutation in patients with valvular heart disease in northern Thailand. *J Med Assoc Thai* 2009;92:1597-601.

23. Park YK, Lee MJ, Kim JH, Kim SJ, Kim JS,

Lee SY, et al. Lack of Association of Clinical Factors (SAmE-TT2R2) with CYP2C9/VKORC1 genotype and anticoagulation control quality. *J Stroke* 2015;17:192-8.

